

THE PERFORMANCE OF A LIFETIME

# TARGA 53 OPEN



---

## FUN NEVER FELT THIS BEAUTIFUL

---

“Pure, unadulterated enjoyment”.  
This is a sentiment that applies to all aspects of the Targa 53 OPEN – from the visual impact of its bold and beautiful design, to the exhilarating joy one feels as it rises up onto the plane and powers across open waters.

In fact, everything about the Targa 53 OPEN has been carefully considered with uninterrupted fun and freedom in mind.

Take for instance the hull, which has been specifically engineered for a smooth, soft ride, and exceptional handling.

Or the open-plan main deck, with its spacious cockpit and retractable hardtop.

Or the large hull windows fearlessly jutting towards the bow and filling each cabin with an abundance of light.

There's no doubt about it, the Targa 53 OPEN with its muscular power and grace, is both magnificent and thrilling in every way!





---

## LET THE GOOD TIMES ROLL

---

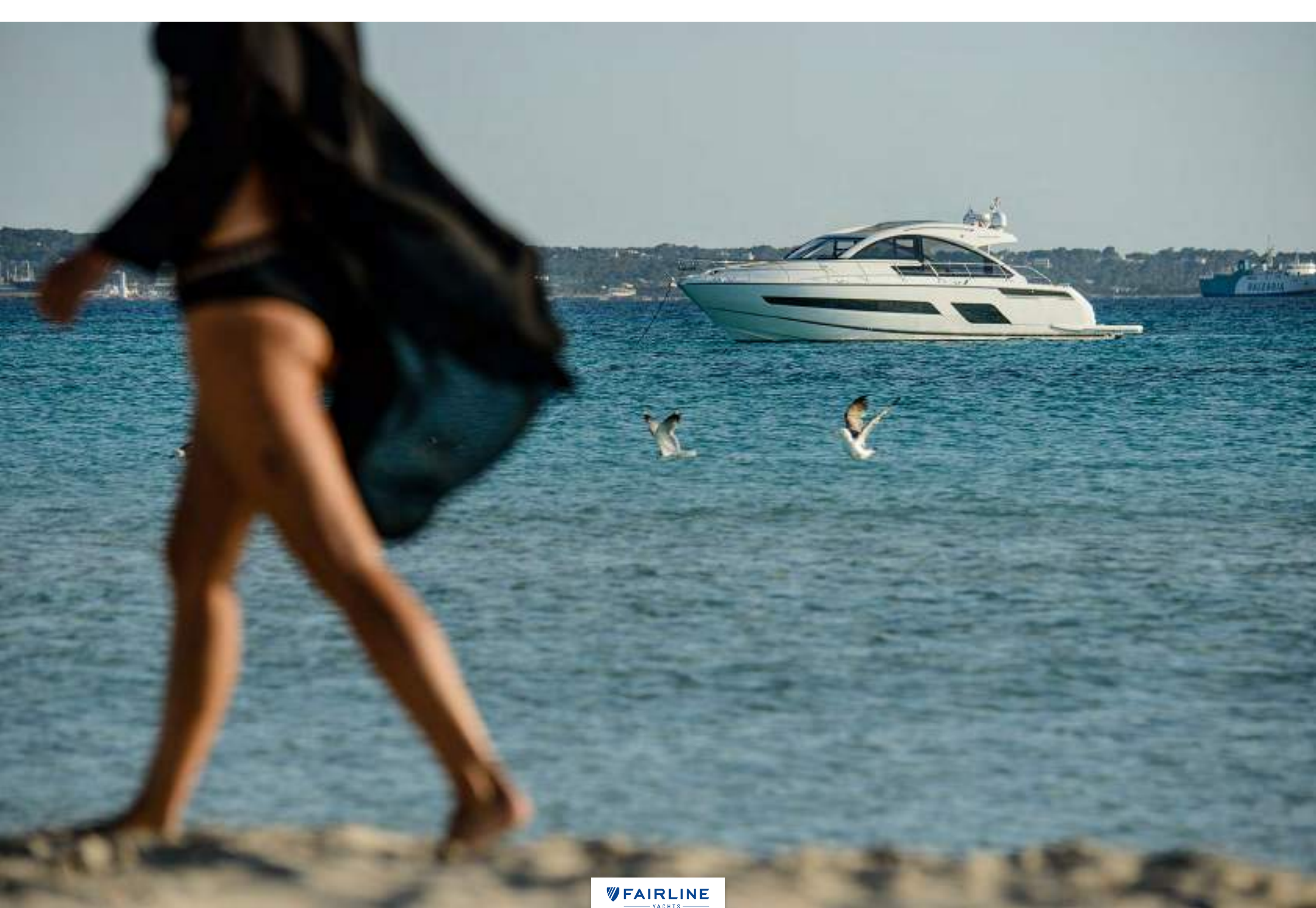
The Targa 53 OPEN is a natural-born entertainer. Whether it's a day out with the family, or casual gathering of friends, every element of its generous layout has been purposely handcrafted for a relaxed, open and enjoyable environment.

### Specification highlights:

- Layout options, including 2 or 3-cabin/2-heads configuration
- Spacious cockpit with generous U-shaped seating
  - Oversized aft sunpad
  - Large garage to house a Williams 325 JetRib
  - Integrated ice chamber

### Optional equipment highlights:

- Aft facing 42" high brightness, waterproof TV
- Fully equipped wet bar – BBQ griddle, sink, fridge and ice maker
  - Gyroscopic stabiliser
  - Space for an additional freezer or wine cooler or washer/dryer
- Integrated, powered sun canopy over aft sun bed
- Marble interior features with leather inlays



FROM OUTSIDE THE TARGA 53 OPEN  
EXUDES GRACE,  
STYLE AND POWER













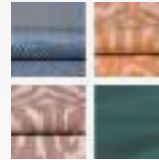


---

## AND THE INSIDE IS AN EQUALLY MAGNIFICENT EXPERIENCE

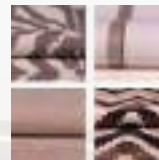
---

This is especially true, given the fact that we have handpicked four beautiful interior design schemes for you to choose from:



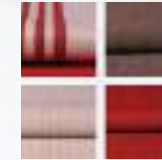
### Amalfi

Inspired by Liguria's local architecture, this scheme exudes the sunny warmth synonymous with fragrant Italian lemon trees and the umbrella-lined shores of the Amalfi Coast.



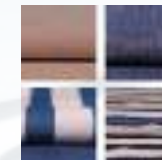
### Capri

Understated, earthy colours, effortlessly combined with rich natural textures. All the hallmarks of an interior design collection that is as gentle as the Mediterranean breeze.



### Hamptons

Evoking elegant vintage design cues, whilst offering a bold and contemporary interpretation of the luxury that was once the preserve of America's East Coast.



### St. Tropez

An ode to the sea where all manner of deep, oceanic blues tastefully swirl with muted greys, delicate creams and classic nautical motifs.



PERFECTLY PROPORTIONED  
IN ALL THE RIGHT PLACES



[Click here for full Specification ►](#)

#### Principal Dimensions

- Length overall (exc. pulpit): 53'6" (16.32m)
- Beam: 14'10" (4.52m)
- Sleeps: 4 – 6
- Draught: 3'11" (1.20m)
- Height above waterline: 15'1" (4.60m)
- Transport height: 15'11" (4.87m)
- Dry weight (approx.): 19.19 imp. tons / 21.49 US tons (19,500kg)
- Fuel capacity: 530 gallons / 637 US gallons (2,412 litres)
- Water capacity: 120 gallons / 145 US gallons (550 litres)
- Classification: Category B
- Capacity: 16 persons

#### Engines and Performance

- 2 x Volvo Penta D11-675 shaft drive, diesel (1350hp) 30 knots
- 2 x Volvo Penta D11-725 shaft drive, diesel (1450hp) 32 knots

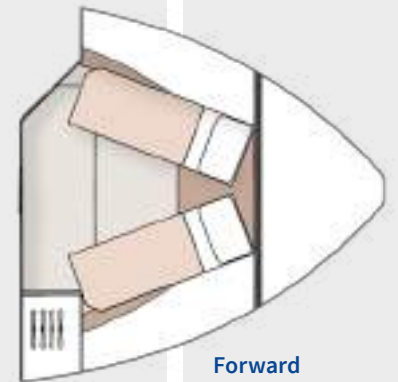
TARGA 53 OPEN  
MAIN DECK



TARGA 53 OPEN  
**LOWER DECK**



2 Cabin

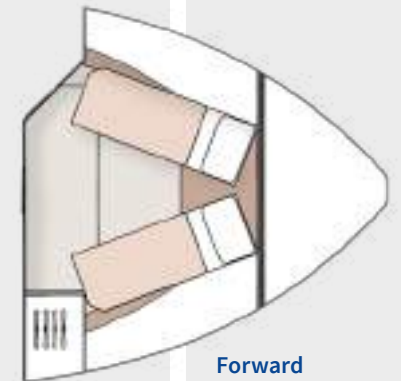


Forward  
cabin scissor  
berth option

TARGA 53 OPEN  
**LOWER DECK**



3 Cabin



Forward  
cabin scissor  
berth option

---

## JOIN THE FAIRLINE FAMILY.

---

Come to us for adventure. Come to us for design and heritage. And come to us for forward thinking. But most of all, come and experience our acclaimed Dealership network.

Each Appointed Fairline Dealer is a professional, thriving business, working with your best interests at heart and using their intimate local knowledge to your advantage. Yes, they will provide you with a trusted service, but also friendship and care beyond the call of duty.



Fairline Argentina	Fairline Italy
Fairline Australia	Fairline Korea
Fairline Baltic	Fairline London
Fairline Benelux and West Germany	Fairline Malta
Fairline Brazil	Fairline Menorca
Fairline Cala d'Or	Fairline Mexico
Fairline Channel Islands	Fairline Middle East
Fairline Chesapeake	Fairline New York
Fairline Colombia	Fairline New Zealand
Fairline Côte d'Azur	Fairline North Mallorca
Fairline Croatia	Fairline Norway
Fairline Cyprus	Fairline Philippines
Fairline Denia	Fairline Poland
Fairline Denmark	Fairline Poole
Fairline Eastbourne	Fairline Portugal
Fairline Eastern Canada	Fairline Russia
Fairline Egypt	Fairline Singapore
Fairline Finland	Fairline Southampton
Fairline Florida	Fairline South Africa
Fairline Great Lakes	Fairline South China
Fairline Greece	Fairline South Mallorca
Fairline Hong Kong	Fairline Sweden
Fairline Ibiza	Fairline Switzerland
Fairline India	Fairline Thailand
Fairline Israel	Fairline Turkey
	Fairline Ukraine

Fairline Yachts constantly seek ways of improving specifications, design and production. Therefore, alterations take place on a continuous basis. Whilst every effort is made to produce up-to-date literature, the descriptions, specifications, illustrations and photographs in this brochure should not be regarded as a definitive guide to current specifications, nor does it constitute an offer for the sale of any particular boat. Performance estimates are given in good faith, but are in no way guaranteed for any particular boat. Dirt on the bottom of the boat, damage to propellers, engine tuning, external water and air temperatures and the weight of crew, fuel and water carried can all adversely affect performance. For these and other reasons we can give no performance guarantees.



# TARGA 53 OPEN